



广州市医疗保险服务管理局

二〇一〇年八月

80

200 /

4-23

7

3

1000

3 2009

2

90730

9 1

8 31

11 30

9 1

11 30

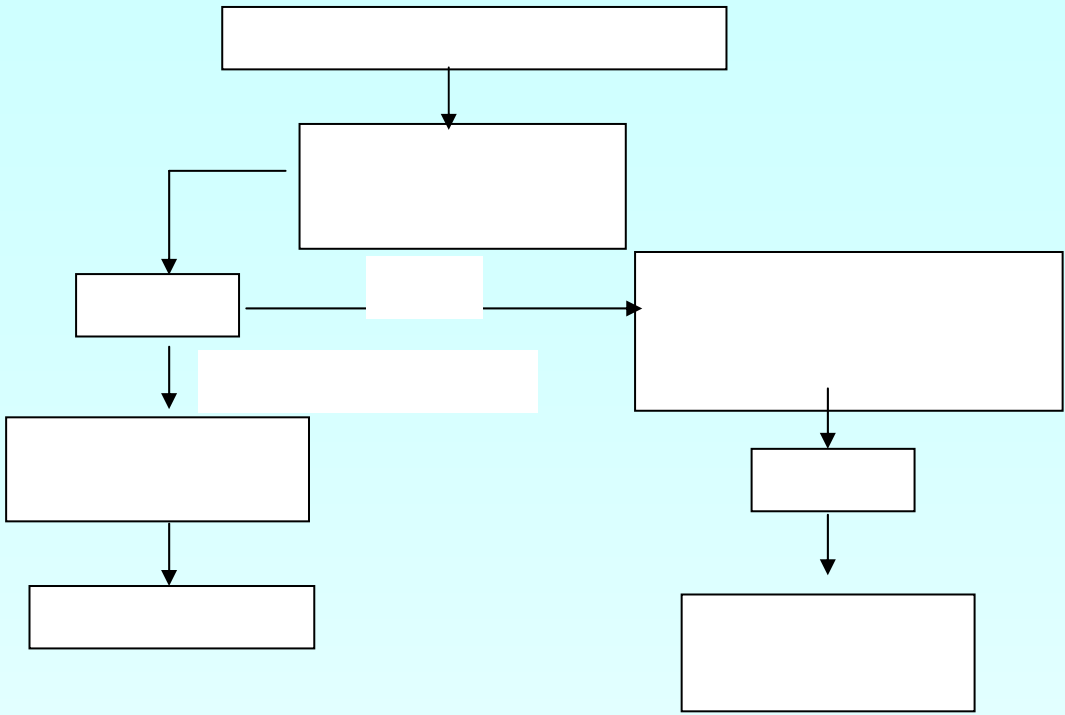
8 31

561

3

1

2



2

90%

80

50

300 /

2

1

50

720 /

7

80

60

100

2

			( )

\*

\*

	600 /	---
		6000
		5500
		4500
$\beta$		3000
	3500	
	150 /	---

		%	
	150	85	15
	300	75	25
	600	65	35

5%

90%

80% 70%

\*

\*





[www.gzl.ss.gov.cn](http://www.gzl.ss.gov.cn)

[www.gzyb.net](http://www.gzyb.net)

12333